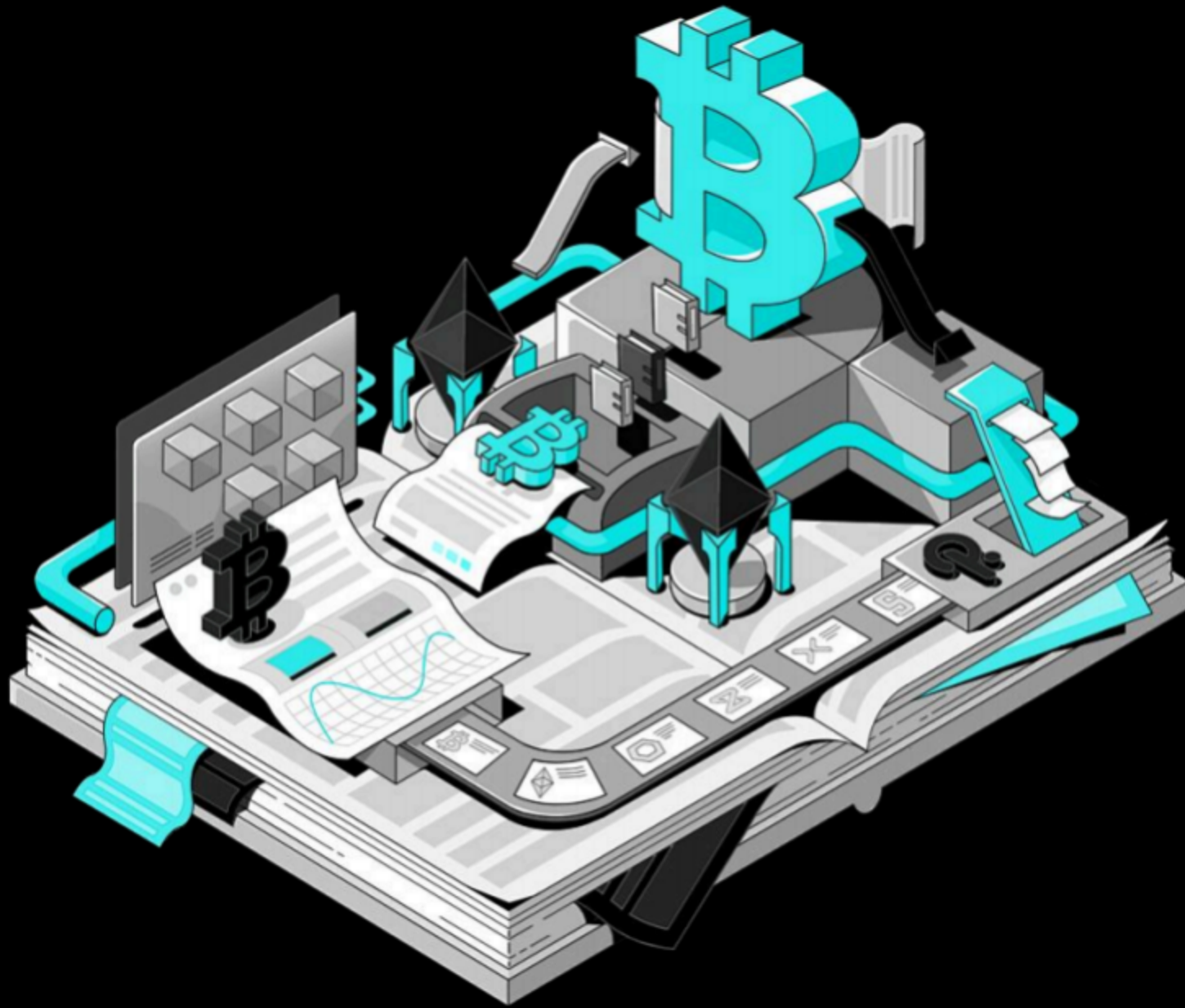




TradeTide AI

Execution-First DeFi Trading Agent

From AI insights to real execution – reshaping the future of trading agents.



Research Agents

Only deliver information → no execution, no defensibility.

DeF AI Terminals

Rely on intent parsing → users face decision paralysis, execution fails.

Autonomous Bots

Focused on one strategy → limited scope, no scalable infra.

Core Issue: Users don't need more "advice." They need agents that execute reliably across CEX, DEX, and cross-chain.



Tradetide bridges AI insights with real execution.

Built to evolve

Smart Analysis



AI-generated insights

Backtesting + One-Click Execution



reliable infra

Goal-Driven Portfolio Agents

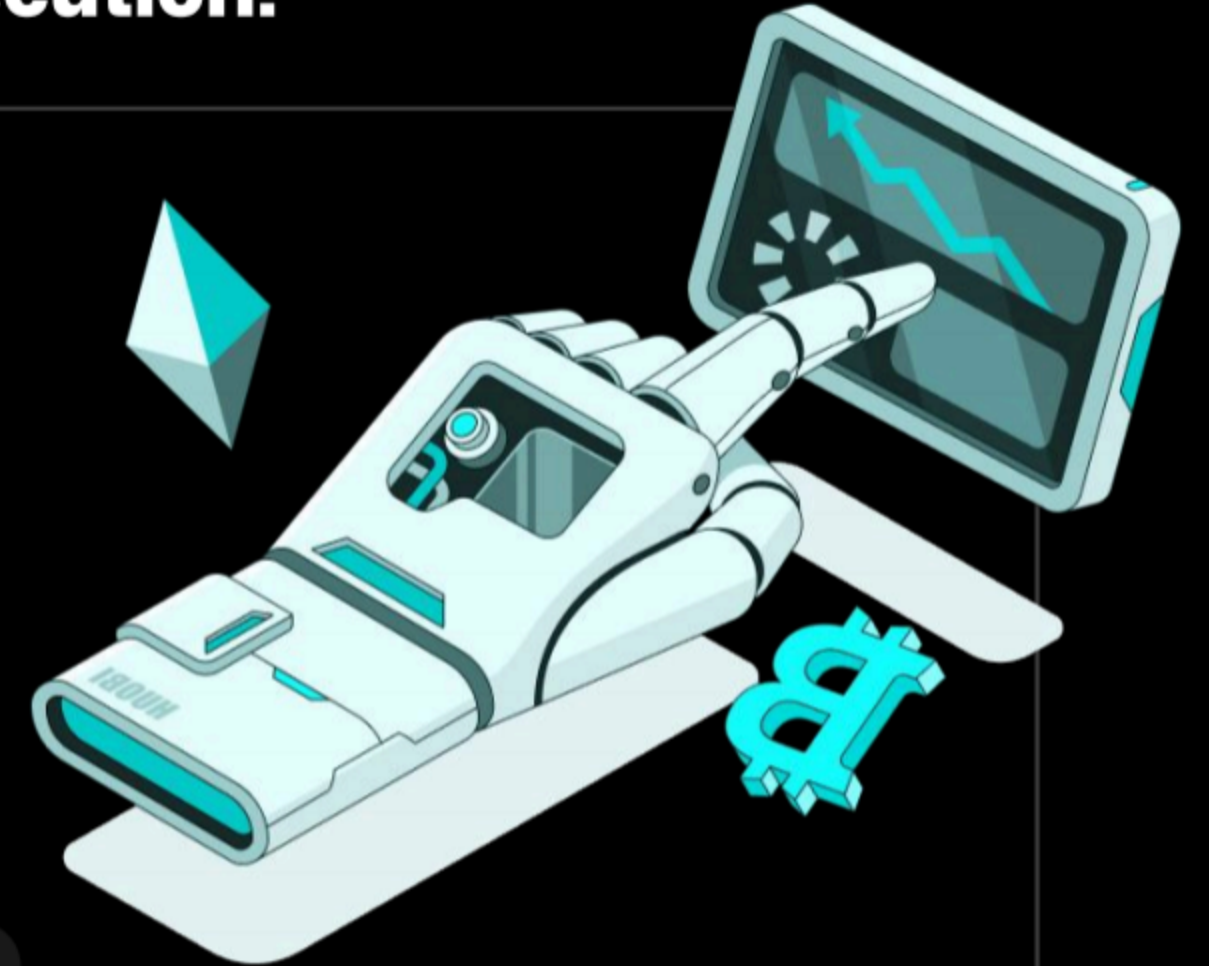


risk-aware asset management

Autonomous Alpha Agent Network



decentralized execution + developer SDK.





DeFi Agent hype

1,900+ projects ~ **\$11.8B** market cap

Most projects stuck at intent/UI layer



Low defensibility

Users and capital demand agents that execute, not just suggest.

Execution-first infra = the biggest gap, and the strongest moat.





Smart Analysis (Live)

Input ticker/CA → AI delivers technical analysis & trade suggestions.

Backtesting & Execution (Coming Soon)

Multi-timeframe backtests + API execution on Binance, OKX, major DEXs.

Goal-Driven Agents (Planned)

Set return targets & risk tolerance → autonomous strategy orchestration.

Strategy Marketplace (Planned)

Copy and deploy strategies from community & pro traders.

Autonomous Alpha Agent Network (Vision)

Decentralized execution infra, SDKs, and \$TIDE DAO governance.

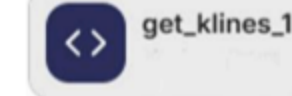
User1

Please analyze the recent market trend of ETH for me.



TradeTide

I'll analyze the recent market trend for ETH (Ethereum) by examining multiple timeframes to give you a comprehensive view. Let me pull the latest data.



Based on the daily ETH/USDT data from the past 100 days, here's my technical analysis of Ethereum's recent market trend:

Overall Market Structure

ETH has experienced significant volatility with a clear **bullish bias** over the analyzed period. The price has moved from approximately \$2,528 to \$4,322, representing a **+71% gain** over roughly 3 months.

Key Technical Observations

Trend Analysis

- **Primary Trend:** Bullish (higher highs and higher lows)
- **Recent consolidation:** Price appears to be consolidating between \$4,200-\$4,500 after the strong rally
- **Support Levels:** Key support at \$4,250-\$4,300 zone, with stronger support around \$4,100
- **Resistance Levels:** Immediate resistance at \$4.450-\$4.500. with maior resistance around



Technical Analysis





Project	Strength	Weakness	Tradetide Edge
Giza	DeFi adapter infra	Weak auth & UX	Execution-first + infra + UX
Brahma	Policy engine	Fragmented use cases	Unified platform, scalable
Almanak	Quant reasoning	No live product	Already live + execution roadmap
Infinit	Good intent UX	Weak backend	Blend of terminal + execution
Tradetide	Execution-first + roadmap	—	End-to-end evolution: analysis → execution → portfolio agents



Data Loyer

On-chain (The Graph, Glassnode), CEX APIs, sentiment (Twitter, Telegram).

processing Layer

Kafka (real-time streams), PySpark, InfluxDB.

Al Layer

LSTM + LightGBM + Prophet → price & trend forecasting.
Fine-tuned BERT → sentiment + intent recognition.

Execution Loyer

Binance/OKX APIs, DEX routing.
Roadmap: MPC wallets, MEV-protected execution, cross-chain infra.

Future

SDK, decentralized execution, policy engine, DAO governance.



	Retail Traders	pro Traders	Developers institutions
Problem	Too much noise, no reliable execution.	Managing CEX + DEX + cross-chain manually = high risk & inefficiency.	Existing agents are fragmented or single-protocol.
Tradetide	From AI insights → one-click, risk-managed trades.	Unified infra for backtesting, automation, and execution.	SDK + infra to build custom autonomous alpha agents.



150,000+

community members (X, Telegram, Discord).

15,000+

on-chain interacting users.

Testnet live for >

5 months.

Strong seed backing



CATCHERVC





Performance Fees

AI strategies manage funds



Vault manager model

Execution Fees

Cross-chain routing, MEV protection, SDK/API usage.

Token (\$TDTE)

DAO governance + protocol fee capture







Thomas

CEo and Co-founder

B.Sc. in Mathematics and Finance, University of Leeds

Over 8 years of experience in Cryptocurrency

Former managing partner at a Web3-focused VC, managed a \$5M AUM fund, and invested in more than 80 blockchain startups



Serena

chief Business officer(C BO)

M.Sc. in International Finance, University of Glasgow

2+ years of experience in Web2 digital marketing and user acquisition

BD Lead @ Web3 Media Platform

2-Yr Analyst @ Web3-Focused VC



TradeTide AI



tradetides.ai



team@tradetides.ai